

# Ball Transfer Unit A805-30-16

Ball Units Series A8 - Wheel S/805



-30 °C - +70 °C

swivels easily

wear resistant

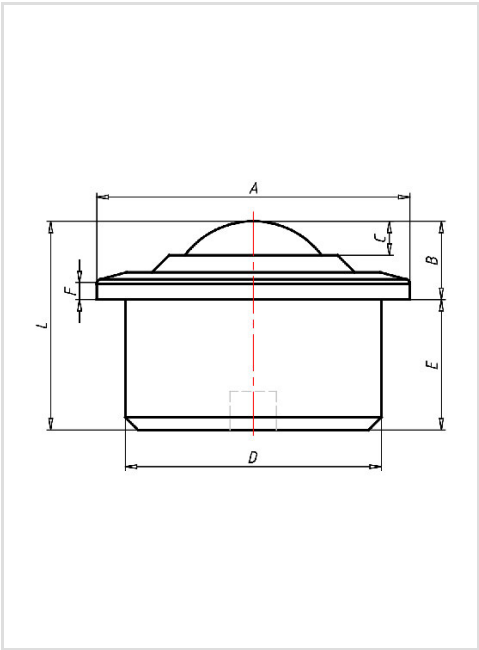
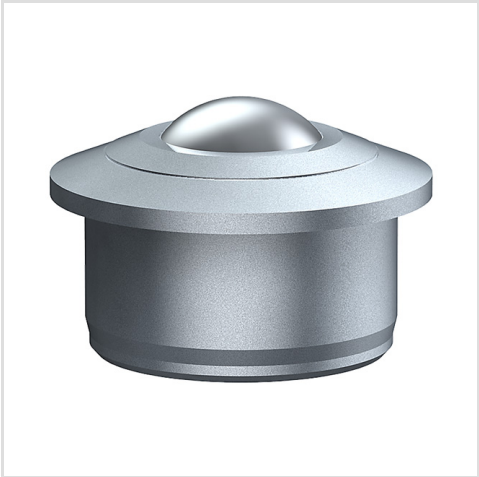
shock proof

floor protective

weather proof

Wheel

Ball: zinc-plated or stainless steel  
Housing, zinc-plated or stainless steel



Ball Transfer Unit	
Series:	805
Ball-Ø mm:	30
Finish housing:	steel zinc plated
Finish Balls:	stainless steel
Load Capacity kg:	350
Load capacity tested according to EN 12530 and EN 12527	
A mm:	55
B mm:	13,8
C mm:	6
D mm:	45
E mm:	23,0
F mm:	3,4
L mm:	36,8

Advantages

- ✔ Casing made of solid steel on the lathe
- ✔ High load capacity
- ✔ Low profile
- ✔ Several holes to let out dirt 600% better

©Copyright 2024 Rollenbau GmbH, [www.rollenbau.at](http://www.rollenbau.at) 05.05.2024

Applications

- Haulage way
- Assembly lines